

# Logger Creek

345 Bobwhite Ct.



## Property Highlights

- Conveniently located off of Parkcenter Boulevard
- Close to many restaurants, shopping, and banks
- Ample, free on-site parking
- Beautiful surrounding on Logger Creek

## Property Information

<b>Available:</b>	Immediately
<b>Offer for:</b>	Lease
<b>Divisible:</b>	Yes
<b>Building Type:</b>	Office
<b>Building Quality:</b>	Class B
<b>Floors:</b>	2
<b>Parking:</b>	Ample
<b>Suite Sizes:</b>	1,853-5,207 SF

## Lease Terms

<b>Preferred Term:</b>	3-5 years
<b>Lease Type:</b>	FLSV
<b>Rent/SF:</b>	\$17.00
<b>TI Allowance:</b>	Negotiable

## Available Space

Suite	RSF	Rate
110	2,297	\$17.00
120	2,910	\$17.00
140	1,853	\$17.00

For Additional Information, please contact:

Jim Hosac

[jim@icbre.com](mailto:jim@icbre.com)

(208) 850 8470

Darin Burrell

[darin@icbre.com](mailto:darin@icbre.com)

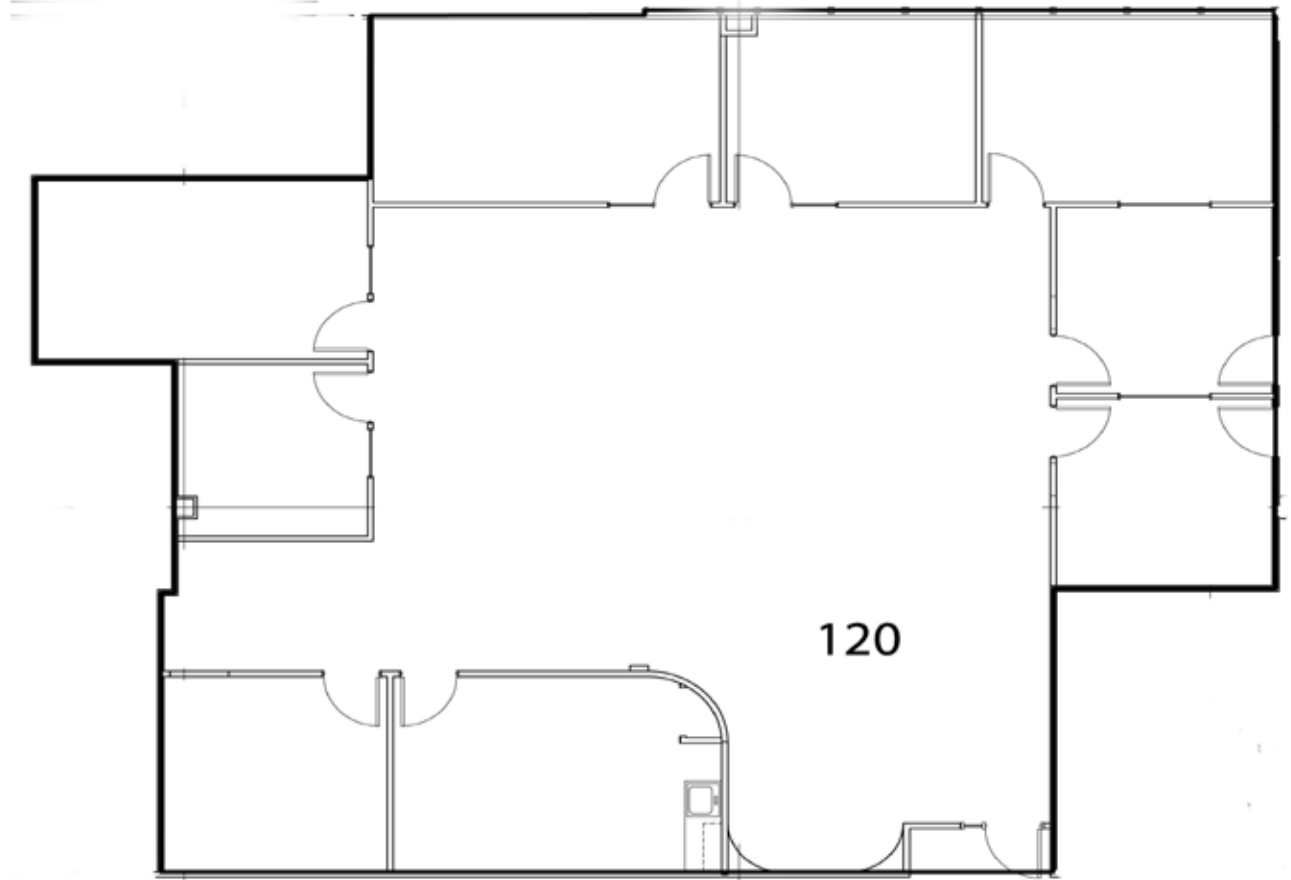
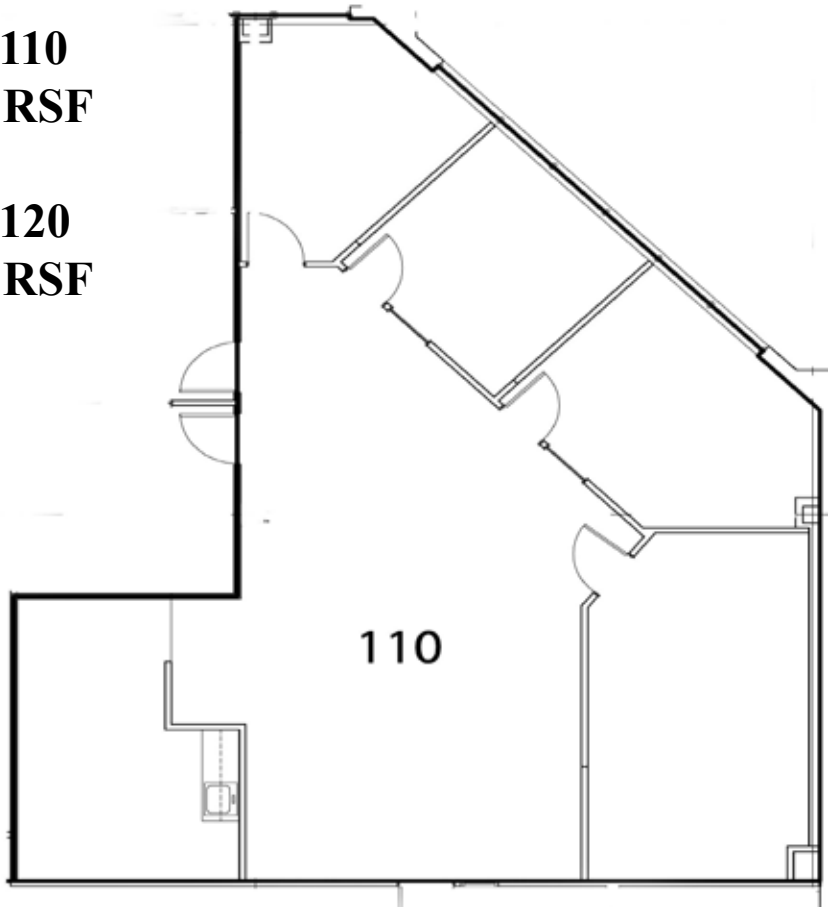
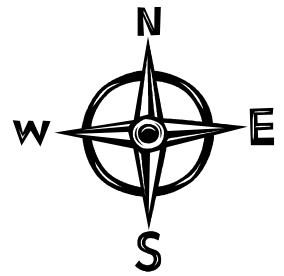
(208) 343 9300

**ICB**  
IDAHO COMMERCIAL BROKERAGE

# Floor Plan

**Suite 110**  
**2,297 RSF**

**Suite 120**  
**2,910 RSF**



**ICB**  
IDAHO COMMERCIAL BROKERAGE

This information was obtained from sources believed reliable but cannot be guaranteed. Any opinions or estimates are used for example only. This data is subject to price change corrections, errors, omissions, prior sale and/or withdrawal.

# Floor Plan

**Suite 140**  
**1,853 RSF**

