

OFFICE SPACE FOR LEASE



10147 WEST EMERALD Boise, ID

INFORMATION

Available :	Immediately
Offer for:	Lease
Vacant:	No
Divisible:	Yes
Building Type:	Office
Building Quality:	Class A
Building Size:	18,779 SF
Floors:	1
Total Size:	17,269 SF
Zoning:	M-1D
Power:	Ample
Parking:	4:1,000

LISTING REMARKS

- Conveniently located on Emerald St. in the Emerald Tech Center
- 10'x10' overhead door on west side of the building
- Open floor plan with large conference rooms and reception area
- Storage Area

CONTACT INFORMATION

Agent:	Jim Hosac	Darin Burrell
Phone:	(208) 343.9300	(208) 343.9300
Fax:	(208) 426.0456	(208) 426.0456
Email:	jim@icbre.com	darin@icbre.com

Website: www.icbre.com

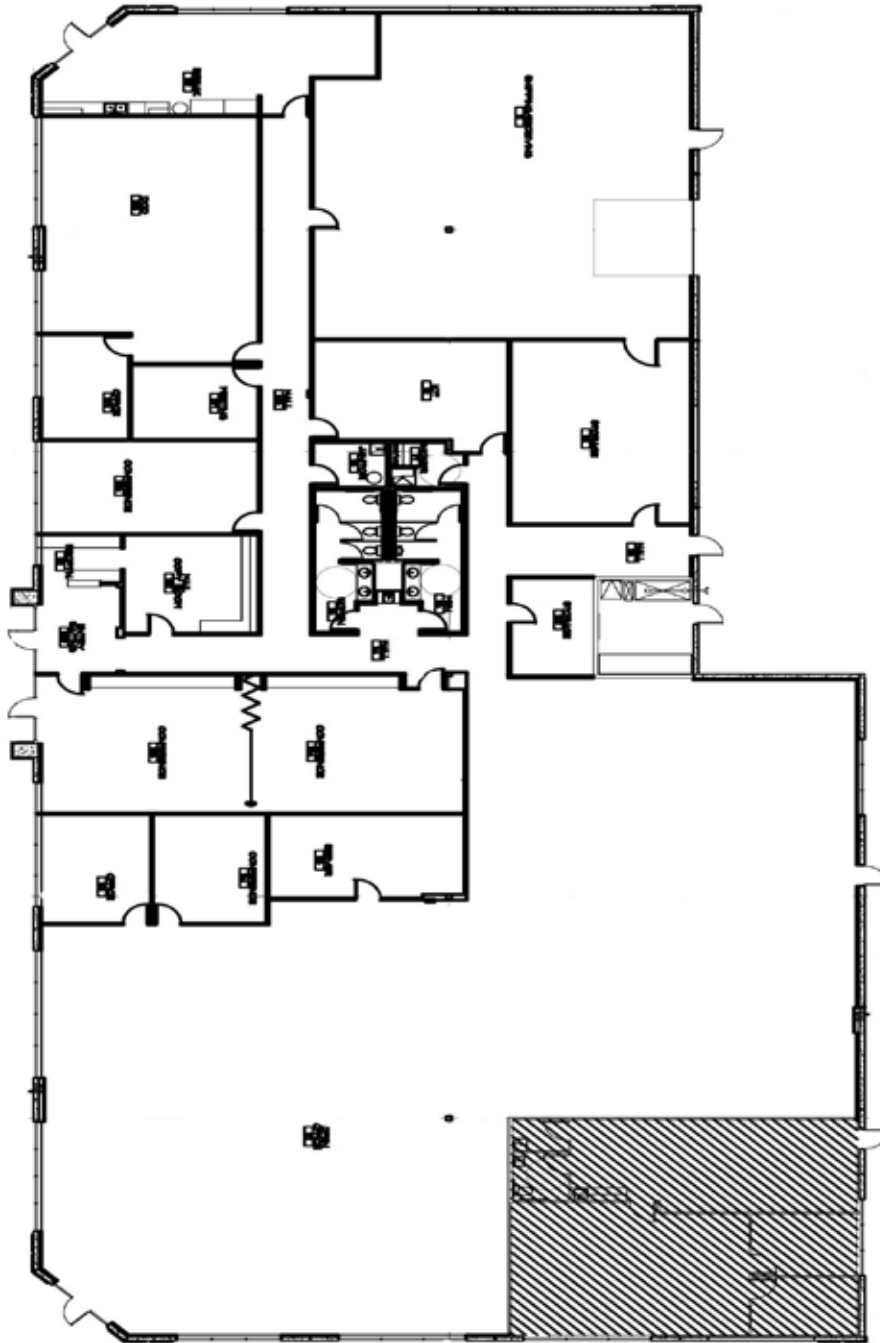
LEASE TERMS

Preferred Term:	3-5 years
Lease Type:	Full Service
Rent/SF:	\$17.00/ SF



This information was obtained from sources believed reliable but cannot be guaranteed. Any opinions or estimates are used for example only. This data is subject to price change corrections, errors, omissions, prior sale and/or withdrawal.

10147 W. Emerald St.



Agent: Jim Hosac Darin Burrell
Phone: (208) 343.9300 (208) 343.9300
Fax: (208) 426.0456 (208) 426.0456
Email: jim@icbre.com darin@icbre.com
Website: www.icbre.com

ICB
IDAHO COMMERCIAL BROKERAGE

This information was obtained from sources believed reliable but cannot be guaranteed. Any opinions or estimates are used for example only. This data is subject to price change corrections, errors, omissions, prior sale and/or withdrawal.

10147 W. Emerald St.



Agent: Jim Hosac Darin Burrell
Phone: (208) 343.9300 (208) 343.9300
Fax: (208) 426.0456 (208) 426.0456
Email: jim@icbre.com darin@icbre.com
Website: www.icbre.com



This information was obtained from sources believed reliable but cannot be guaranteed. Any opinions or estimates are used for example only. This data is subject to price change corrections, errors, omissions, prior sale and/or withdrawal.