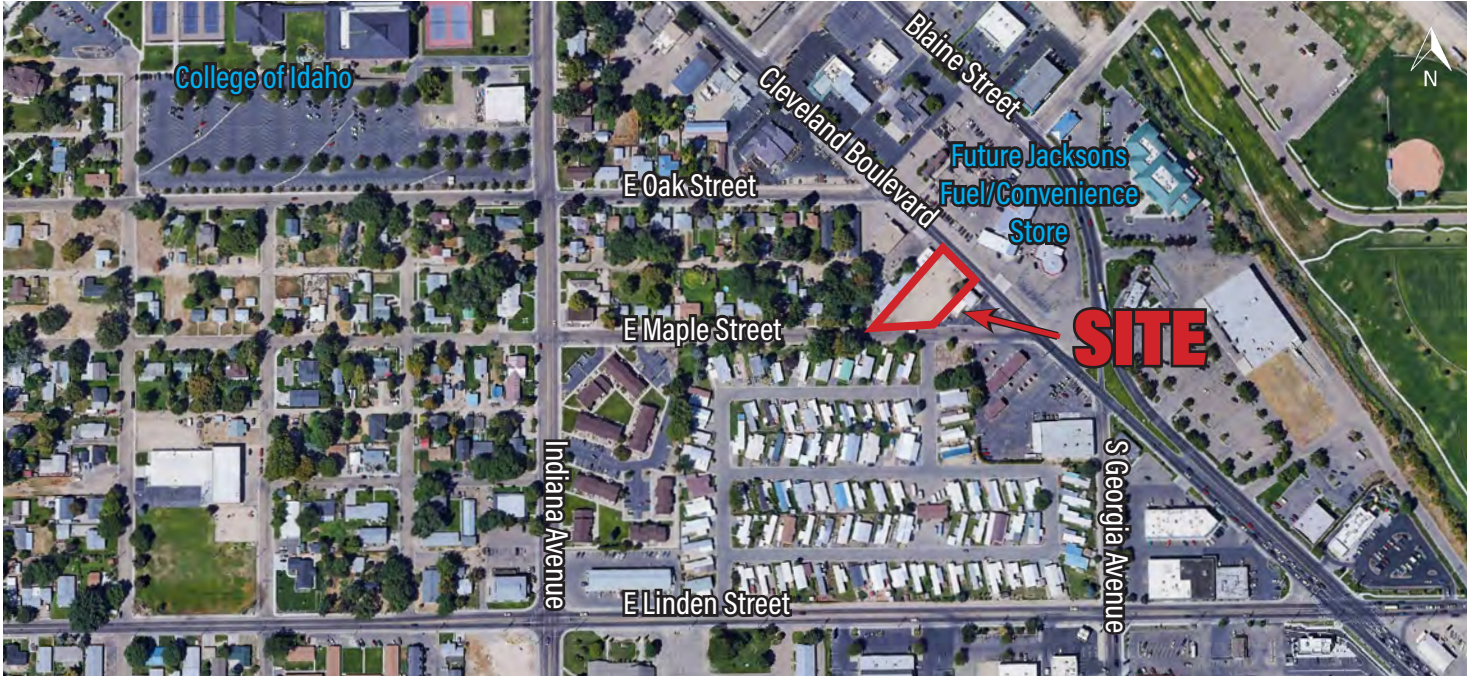


LAND FOR SALE



## 2622 CLEVELAND BOULEVARD

CALDWELL, IDAHO

ASKING PRICE:

**\$159,000**

Acres

0.403

Zoning

C-2 (annexed into City of Caldwell)

Parcel Number

R0021900000

*FOR ADDITIONAL INFORMATION,  
PLEASE CONTACT:*

**RYAN CANTLON**

mobile: (208) 867-3751

ryan@icbre.com

- Excellent visibility on Cleveland Boulevard
- Close proximity to College of Idaho
- Directly across Cleveland Boulevard from proposed Jackson's convenience/fuel store
- C-2 (Community Commercial) zones are regulated to fulfill general shopping, retail, and professional needs in conjunction with policies of the comprehensive plan
- Contact agent for further information



# ICB IDAHO COMMERCIAL BROKERAGE

AERIAL

2622 CLEVELAND BOULEVARD - CALDWELL, IDAHO



950 West Bannock Street, Suite 420 · Boise, Idaho 83702 · (208) 343-9300 · icbre.com