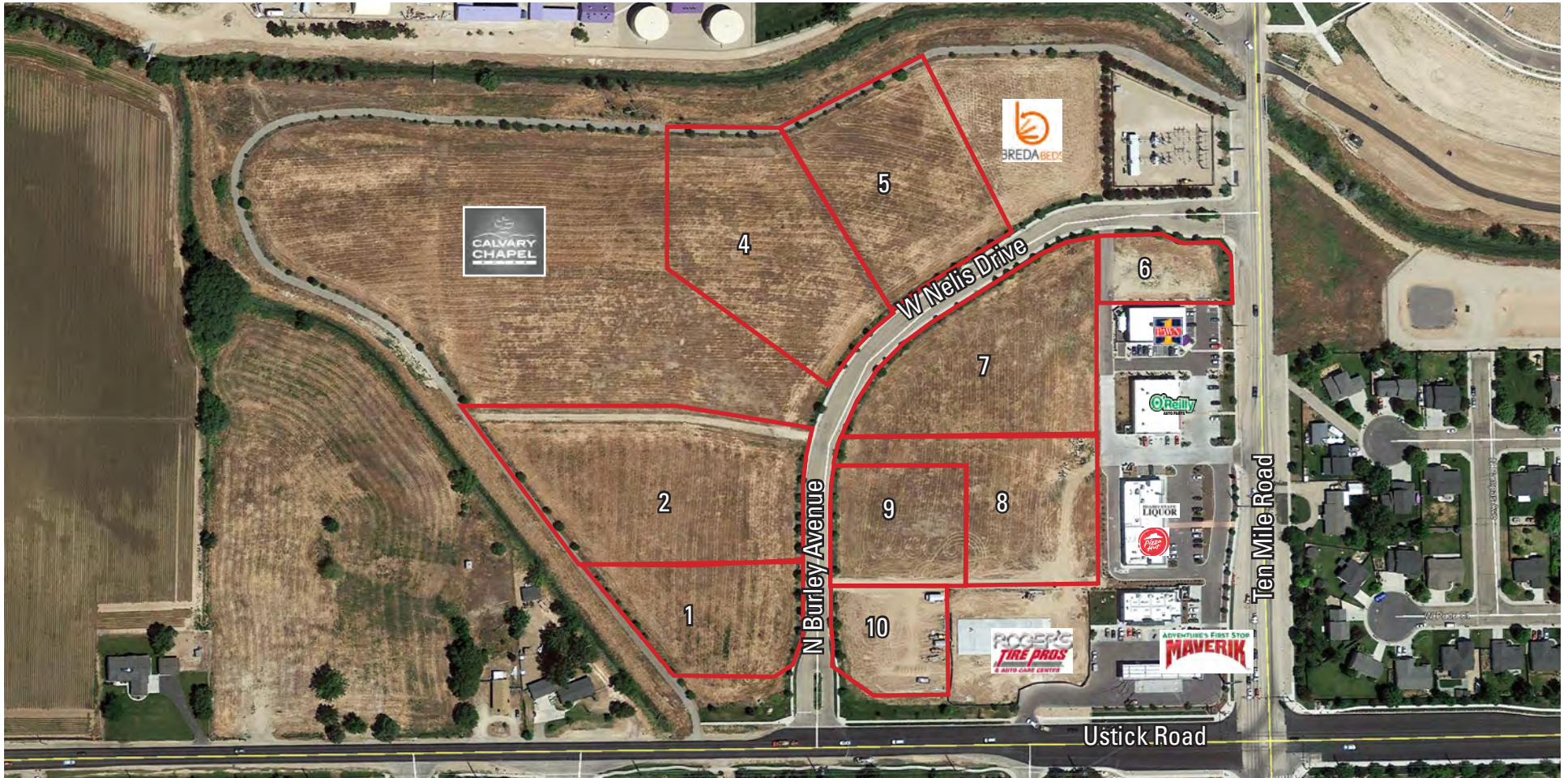


LAND OFFERING



TEN MILE AT USTICK - MERIDIAN, ID 83646

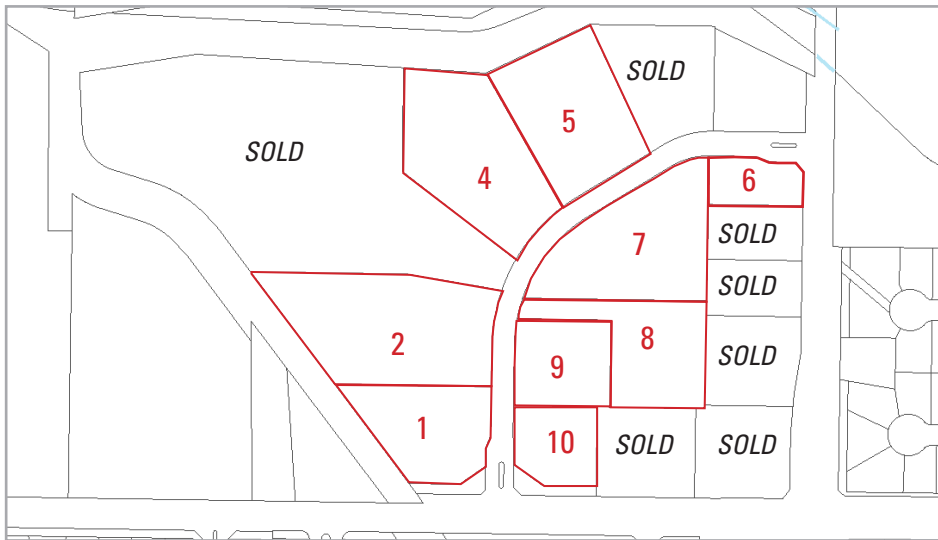
- Commercial lots available (0.586 - 2.928 acre lot sizes)
- C-G and I-L zoning
- Desirable high-growth area

FOR ADDITIONAL INFORMATION,
PLEASE CONTACT:

Ryan Cantlon
Land Brokerage
(208) 867-3751
ryan@icbre.com

OFFERING DETAILS

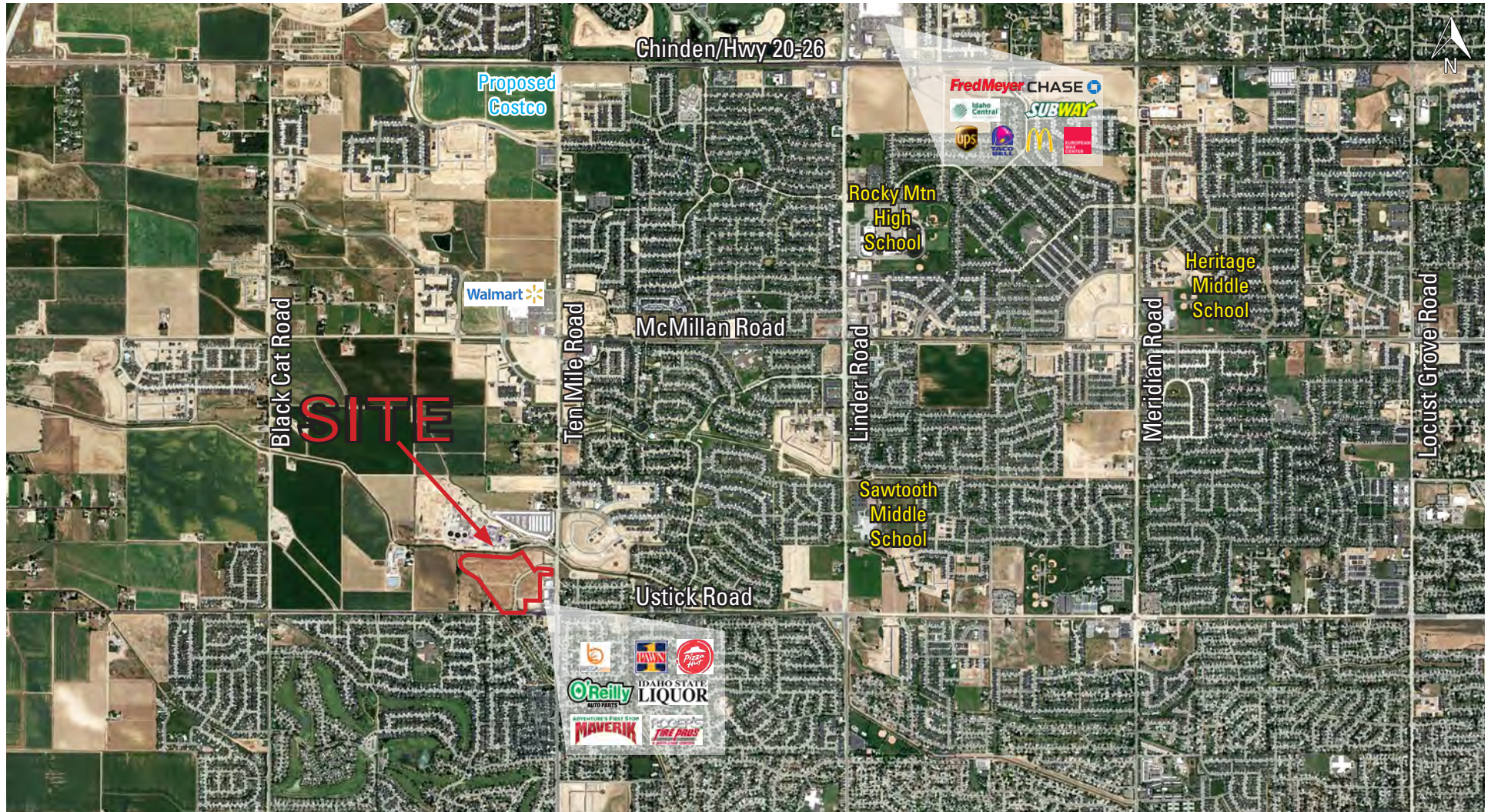
TEN MILE AT USTICK



- Nine lots remaining
- High growth area
- C-G Zoning - General Retail and Service Commercial District
- I-L Zoning - Light Industrial District

Lot Key	Address	Description	Parcel Number	Zoning	Acres	Price/PSF	Asking Price
1	3275 N Burley Ave	Lot 2, Blk 2	R5629430130	C-G	1.508	\$11.00	\$722,573
2	3332 N Burley Ave	Lot 3, Blk 2	R5629930140	C-G	2.928	\$8.00	\$1,020,349
4	3410 W Nelis Dr	Lot 5, Blk 2	R5629430160	I-L	2.485	\$6.00	\$649,479
5	3396 W Nelis Dr	Lot 6, Blk 2	R5629430170	I-L	2.156	\$6.00	\$563,492
6	3285 W Nelis Dr	Parcel A, Blk 1	R5629430011	C-G	0.586	\$16.00	\$408,418
7	3425 W Nelis Dr	Parcel C, Blk 1	R5629430106	C-G	2.355	\$9.00	\$923,254
8	3386 N Burley Ave	Lot 9, Blk 1	R5629430090	C-G	1.627	\$9.00	\$637,849
9	3302 N Burley Ave	Lot 8, Blk 1	R5629430080	C-G	1.122	\$9.00	\$439,868
10	3214 N Burley Ave	Lot 7, Blk 1	R5629430070	C-G	.0847	\$11.00	\$405,849

All information herein has been obtained from sources deemed reliable but is subject to verification by Buyer. This offering is subject to price change, corrections, errors, omissions, prior sales and/or withdrawal.



All information herein has been obtained from sources deemed reliable but is subject to verification by Buyer. This offering is subject to price change, corrections, errors, omissions, prior sales and/or withdrawal.